

REMEMBER WHEN?

The Roundhouse Restaurant opened on the southeast side of the Bridge? **May 27, 1938**

One-way toll collection started? **October 19, 1968**

The Bridge appeared on the cover of Rolling Stone Magazine? **February 26, 1976**

007 was dangling of the top of the Bridge tower awaiting rescue?, *A View to a Kill*, premiered in San Francisco May 22, 1985

The one billionth car crossed the Golden Gate Bridge? **February 22, 1985**

The U.S. Postal Service released 'Turn of the Century' series Golden Gate Bridge stamp? **1998**

The Golden Gate Bridge added Fastrak electronic toll collection? **July 13, 2000**

The young deer that scampered south across the Bridge and disappeared into the Presidio? **May 19, 2004**

The Ostrich got loose on the roadway? **August 29, 2005**

The Queen Mary 2 made maritime history with her maiden call to San Francisco? **February 4, 2007**

A disoriented pelican was rescued on the roadway? **August 10, 2008**

The Amgen Tour of California came across the Golden Gate Bridge in a full on downpour? **February 16, 2009**

When Travel + Leisure Magazine names the Golden Gate Bridge as one of the World's Ten Most Amazing Views? **January 20, 2010**

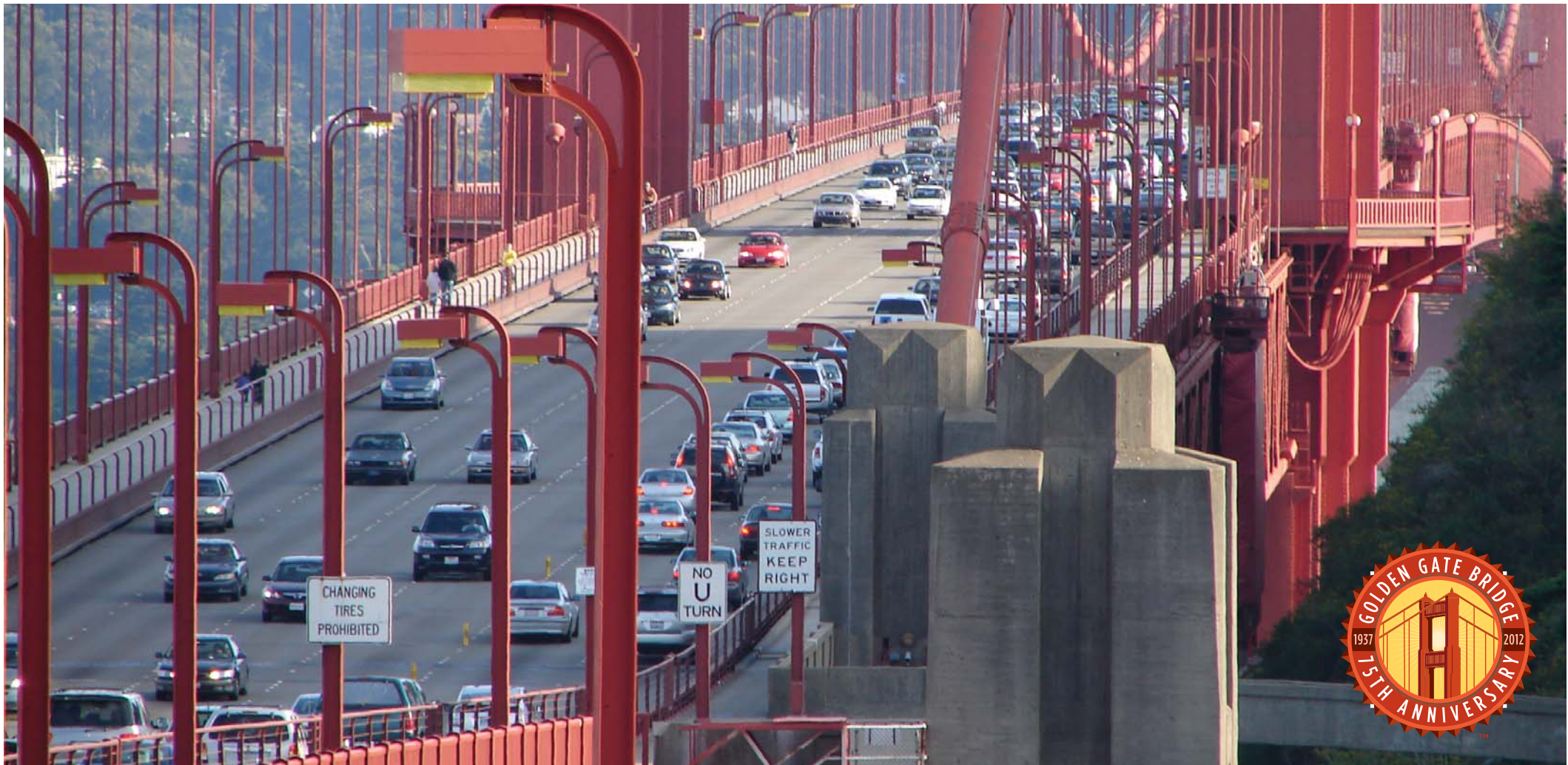


CELEBRATING 75 YEARS, MAY 27, 2012

WWW.GOLDENGATEBRIDGE75.ORG

SUSPENSION BRIDGES

Suspension Bridge	Main Span Length		Year Opened
	<i>In feet</i>	<i>in Meters</i>	
1. Akashi-Kaikyo, Japan	6,529	1,991	1998
2. Xihoumen, China	5,414	1,650	2009
3. Great Belt, Denmark	5,328	1,624	1998
4. Runyang, China	4,888	1,490	2005
5. Humber, United Kingdom	4,626	1,410	1981
6. Jiangyin, China	4,543	1,385	1999
7. Tsing Ma, Hong Kong	4,518	1,377	1997
8. Verrazano-Narrows, NY	4,260	1,298	1964
9. Golden Gate, California	4,200	1,280	1937
10. Yangluo, China	4,200	1,280	2007
11. High Coast, Sweden	3,970	1,210	1997
12. Mackinac, Michigan	3,800	1,158	1957
13. Huangpu, China	3,635	1,108	2008
14. Minami Bisan-Seto, Japan	3,609	1,100	1989
15. Second Bosphorus, Turkey	3,576	1,090	1988
16. Balinghe, China	3,570	1,088	2009
17. First Bosphorus, Turkey	3,524	1,074	1973
18. George Washington Bridge, NY	3,500	1,067	1931



CELEBRATING 75 YEARS, MAY 27, 2012

WWW.GOLDENGATEBRIDGE75.ORG

FASCINATING FACTS

Why the name *Golden Gate Bridge*?

The Bridge is named after the body of water that it crosses - the Golden Gate Strait.

Who designed the *Golden Gate Bridge*?

Chief Engineer Joseph B. Strauss led team that included Charles Ellis, O.H. Ammann, Leon Moisseiff, Charles Derleth, Irving Morrow, Clifford Paine and Russell Cone, along with many others.

How long did it take to build the *Golden Gate Bridge*?

It took 4 ½ years, from January 1933 to April 1937.

How long is the Bridge? It is 1.7 miles long, from abutment to abutment.

Why is the *Golden Gate Bridge* painted *International Orange* and *NOT* gold? The Bridge steel was painted red lead primer that inspired architect Irving Morrow to specify the color International Orange as it blended well with the nearby hills and contrasted with the ocean and sky.

The *Golden Gate Bridge* is painted from end-to-end every year, right?

No, the Bridge is being painted constantly as the paint protects the steel from rusting.

How many times has the *Golden Gate Bridge* been closed due to weather? Three times due to high winds in December 1951, 1982, and 1983.

How many vehicles have crossed the *Golden Gate Bridge*?

As of December 31, 2010, 1,916,892,408 vehicles (both directions) have crossed the Bridge since opening day.

How many people celebrated the *50th Anniversary* celebration in 1987?

On Sunday, May 24, 1987, about 300,000 people gathered on the Bridge roadway, with another 400,000 gathered in areas all around the Bridge.



CELEBRATING 75 YEARS, MAY 27, 2012

WWW.GOLDENGATEBRIDGE75.ORG

PRESERVING AN ICON

Keeping the Golden Gate Bridge in sound repair and safe condition is continuous and involves both daily maintenance and large-scale construction projects. Here are just few of the big construction projects undertaken over the last 75 years:

1954 The Bridge has been closed three times due to high winds: December 1, 1951, December 23, 1982, and December 3, 1983. Following the 1951 windstorm, a bracing system was added under the roadway to increase stability during high winds.

1954 The main cable band bolts were retightened for the first time since original construction.

1976 The original vertical suspender ropes were showing signs of corrosion, so all 250 pairs were replaced. The last rope was put into place on May 4, 1976.

1982 The Marin and San Francisco approach viaduct structures were seismically retrofitted to increase earthquakes resistance.

1986 The original 756 concrete roadway sections were replaced, over 401 nights, with a new lighter and stronger, orthotropic steel deck. The weight of the Bridge was reduced by 12,300 tons.

2001 The earthquake upgrade of the Marin approach viaduct structures was completed.

2003 The installation of the public safety railing, separating the roadway and sidewalks, was completed.

2008 The seismic retrofit of the San Francisco approach viaduct structures and Fort Point arch was completed.

2008 The Marin anchorage housing and pylons are currently being seismically retrofitted; the work is planned for completion in 2012.



CELEBRATING 75 YEARS, MAY 27, 2012

WWW.GOLDENGATEBRIDGE75.ORG

THE 1930S

1930

- Chrysler Bldg. was the tallest man made structure in the world at 1,047 ft
- Voters approved a \$35 million bond issue to back Bridge construction

1931

- Empire State Bldg became the tallest man made structure in the world at 1,250 ft
- California quail became the California state bird

1932

- U.S. unemployment climbed to 12 million
- Contracts awarded totaling \$23.8 million for the construction of the Bridge

1933

- *New Deal* social and economic programs authorized to aid the Great Depression
- Construction of the Bridge began

1934

- West Coast Longshoremen's Strike lasted 83 days
- Marin tower was completed

1935

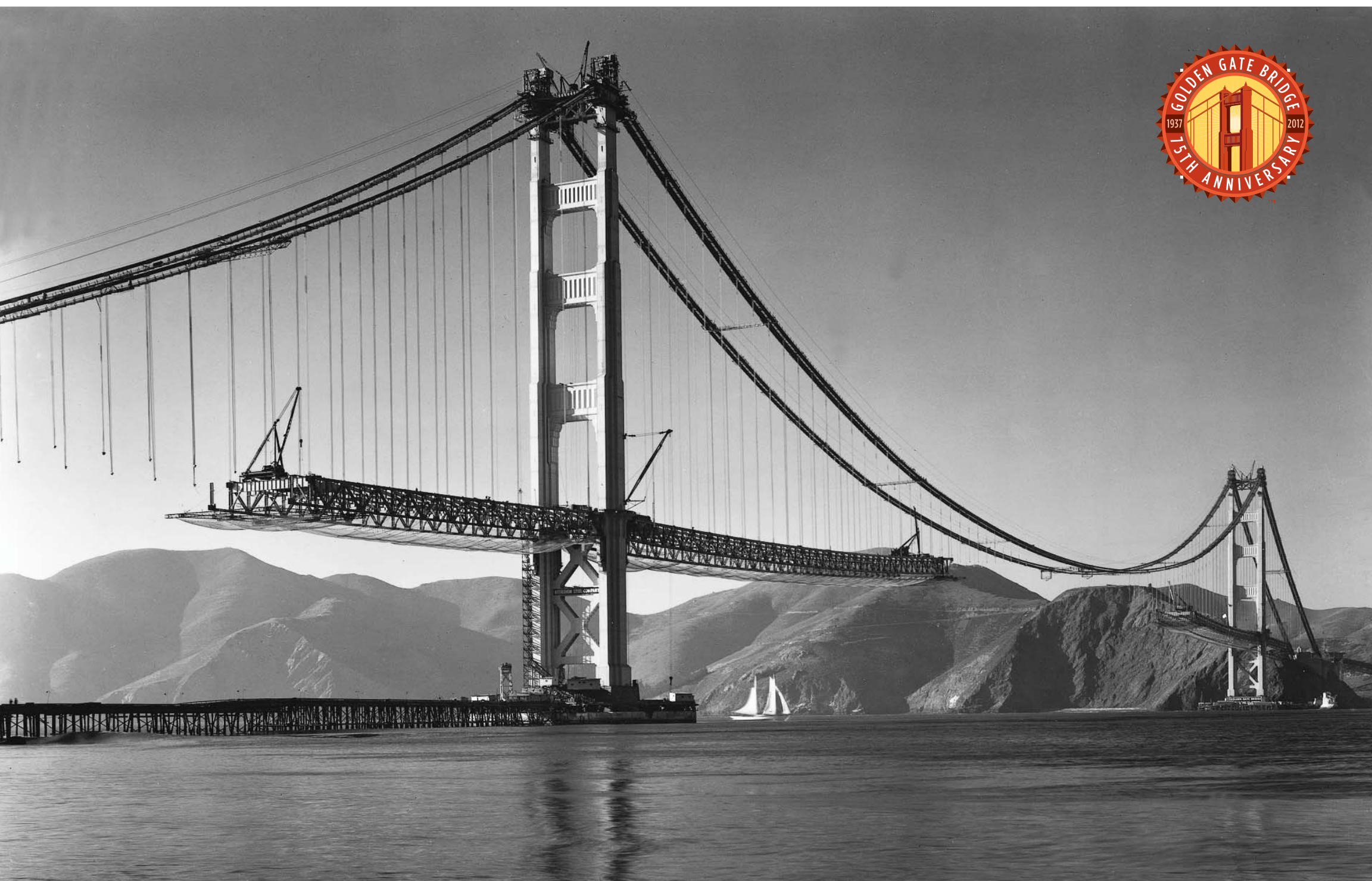
- San Francisco tower constructed and a catwalk is hung before main cable spinning
- Amelia Earhart was 1st first to fly solo across Pacific Ocean, from Honolulu to Oakland

1936

- San Francisco-Oakland Bay Bridge opened
- Bridge main cables completed
- Bridge safety net saved 19 lives, these men became the "Halfway-to-Hell Club"

1937

- Golden Gate Bridge opened
- Disney's *Snow White and the Seven Dwarfs* premiered at Hollywood's Carthay Circle Theatre



CELEBRATING 75 YEARS, MAY 27, 2012

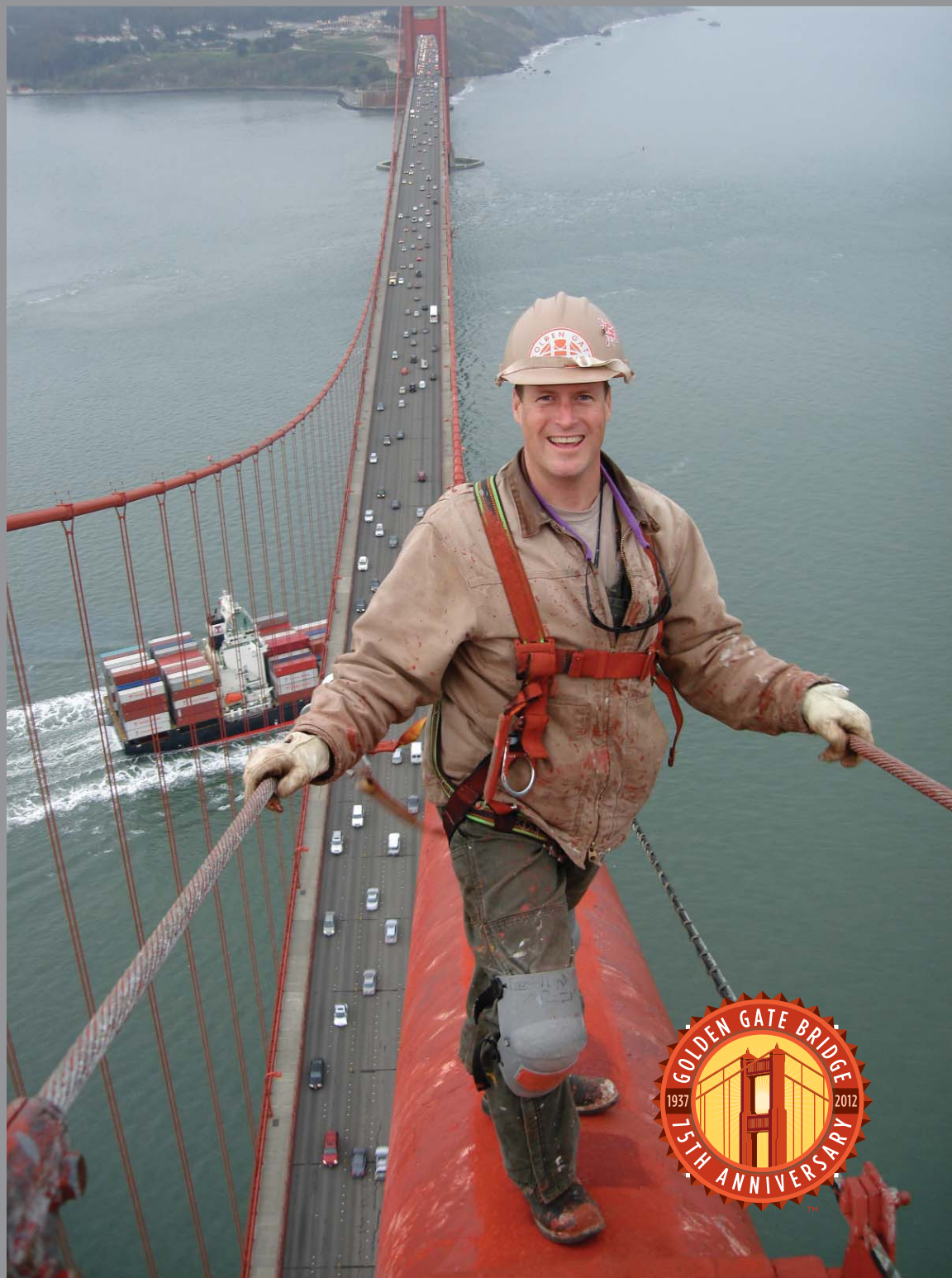
WWW.GOLDENGATEBRIDGE75.ORG

CARETAKING AN ICON

A crew of 28 painters working with apprentices and labors, apply International Orange paint to the steel to keep pace with advancing corrosion, preserving the Bridge for many generations to come.



Dedicated to
the memory
of our
co-worker
Rico M.



CELEBRATING 75 YEARS, MAY 27, 2012

WWW.GOLDENGATEBRIDGE75.ORG

CARETAKING AN ICON

Ironworkers remove corroded steel from the Bridge, replacing it with newly fabricated pieces. They also rig equipment for paint crews. Operating engineers maintain and operate heavy equipment, and maintain the utility systems out on the Bridge required by other workers such as compressed air, water, ventilation, and vacuum systems.

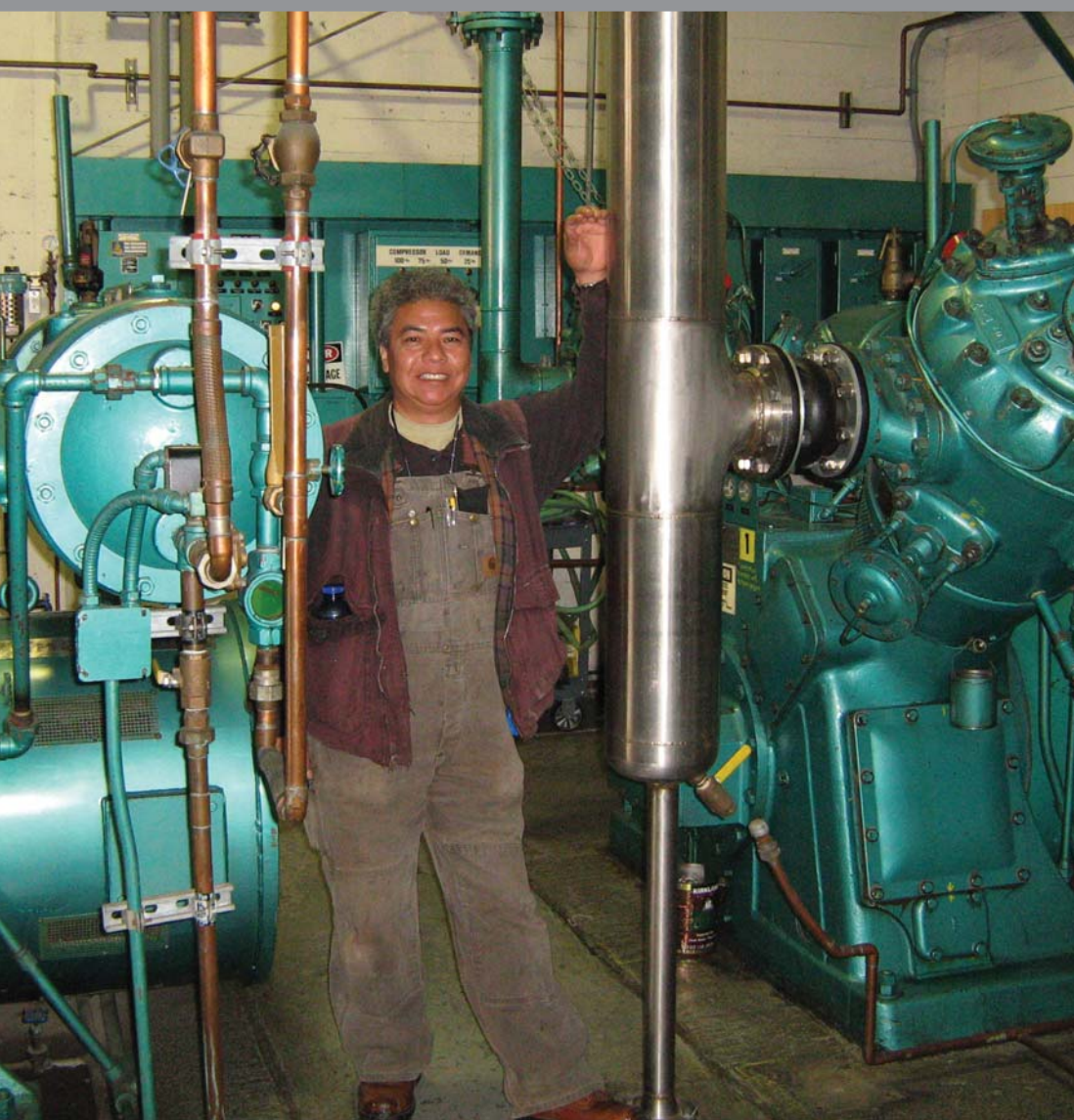


CELEBRATING 75 YEARS, MAY 27, 2012

WWW.GOLDENGATEBRIDGE75.ORG

CARETAKING AN ICON

Bridge electricians and communication technicians provide for the electrical and communication requirements of the Bridge by maintaining and upgrading systems including the toll registry, security, foghorns, generators, control rooms, dispatch, and roadway lighting.



CELEBRATING 75 YEARS, MAY 27, 2012

WWW.GOLDENGATEBRIDGE75.ORG

CARETAKING AN ICON



CELEBRATING 75 YEARS, MAY 27, 2012

WWW.GOLDENGATEBRIDGE75.ORG